

Achievements since September:

Recruitment and assessment

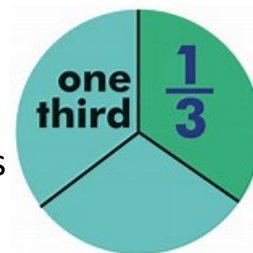


We have **62 participants** with aphasia after stroke enrolled in the study.



Three quarters of our participants (N = 46) have completed **4 month** assessments

One third (N = 21) have completed **10 month** assessments



Conference presentation

Chief Investigator, **Professor**

Katerina Hilari, was invited

to present our research at

the **British Aphasiology**

Society conference in

Sheffield in November 2018



BaS British Aphasiology Society

SUPERB is funded by: **Stroke**
association

And sponsored by:



Newsletter 8, December 2018

What is SUPERB?



SUPERB is a **research study**.

It aims to find out what helps people **adjust** and **get on with life** after **stroke** and **aphasia**.

Why are we doing the research?

People have **emotional needs** after **stroke** and **aphasia**

We **don't know enough** about these needs.

We want to know what **helps**.



What will happen?

SUPERB researchers will:

- visit **60 people with aphasia** at **home**
- ask **questions** about how they are **feeling** and how they are **getting on** with things.



Meet the SUPERB team:

Prof Katerina Hilari is
leading the study

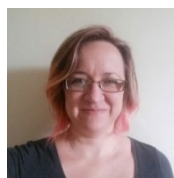


Our other researchers are:

Dr Becky Moss



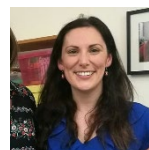
Dr Abi Roper



Dr Nick Behn is
the main researcher



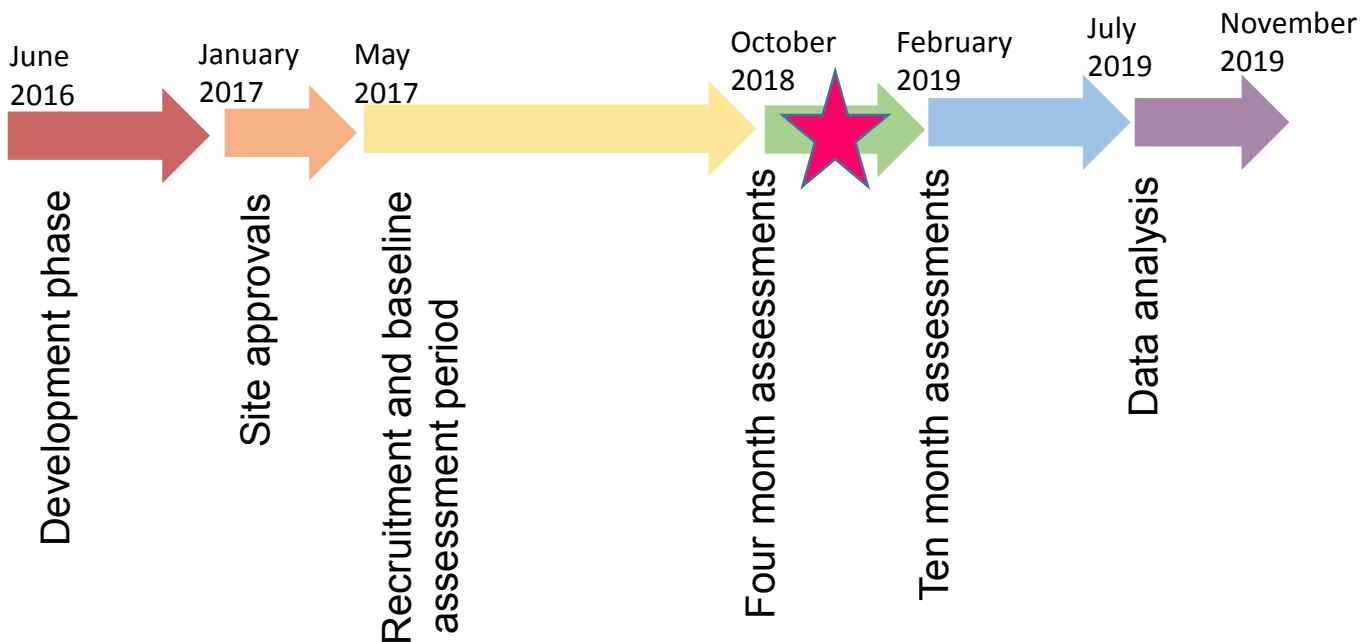
Katie Monnelly



Alex Scott
is our administrator

Newsletter 8, December 2018


SUPERB project progress timeline:



**Season's Greetings
from the all of the
SUPERB team!**



SUPERB is funded by: **Stroke**
association

And sponsored by: 
CITY
UNIVERSITY OF LONDON
EST 1894